

## Aerosol Sensor

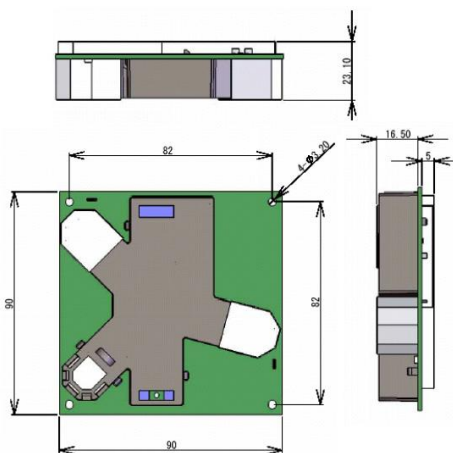
Model AES-1

Model AES-4

### Feature

- Detection Range  
from 0.3 - 10 $\mu$ m or longer
- Unique air sampling method  
using "heater" to generate  
updraft airflow and prevent from  
choked airflow
- Compact size and low cost

### Configuration (unit: mm)



### Shinyei Corporation of America

24 W 40th street, 4th floor  
New York, NY 10018

TEL: 917-484-7884

FAX: 212-704-4206

E-mail:

[tony.tokuya@sca-shinyei.com](mailto:tony.tokuya@sca-shinyei.com)

## AES - 1 (Aerosol Sensor Unit)

Minimum measurement particle size: 0.3  $\mu$ m

## AES - 4 (Aerosol Sensor Unit)

Minimum 0.3  $\mu$ m (micro meter)

Particle sizing into 4 groups

0.3 and longer

0.5 and longer

1.0 and longer

2.5 (or 5.0  $\mu$ m) and longer



### Specification

Light Source	Semiconductor Laser
Life	20,000 hours
Detection Method	Light Scattering Method
Sampling Method	Updraft airflow generated by built-in heater enables air sampling of approx. 0.1 liter per minute
Monitoring Particle Size	0.3 $\mu$ m – approx. 10 $\mu$ m
Operating Temp / RH	0 to 40 deg. C, 30 to 80 %rh
Output	1kHz pulse
Input Voltage	12VDC +/-10%
Power Consumption	300mA
Dimension	3.6" X 3.6" X 0.9" (90 X 90 X 23 mm)
Weight	Approx. 0.27 lbs. (120g)